



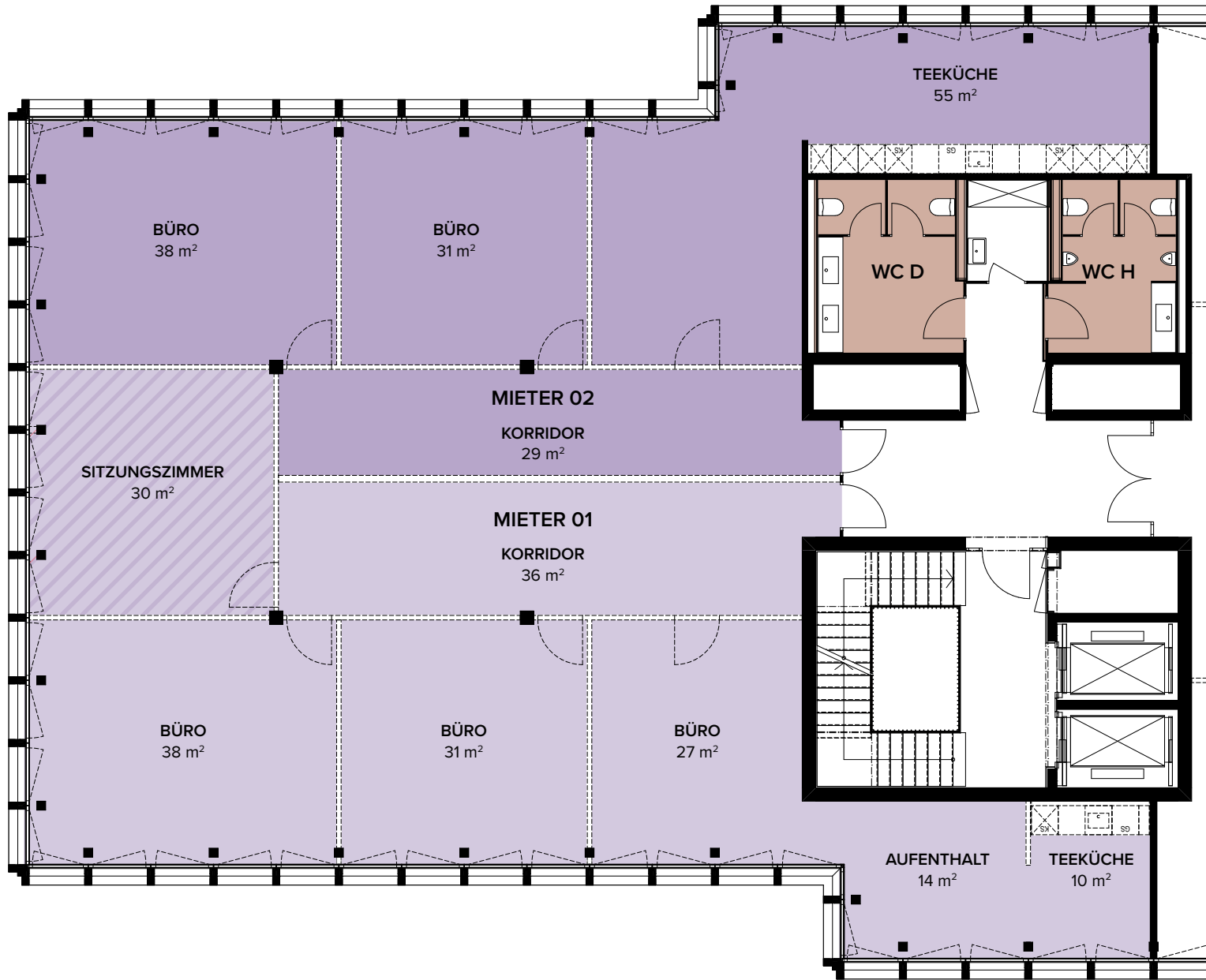


## 2. - 4. OBERGESCHOSS

	Mieter 01	156 m <sup>2</sup>
	Mieter 02	153 m <sup>2</sup>
	Optional	30 m <sup>2</sup>
	Sanitärräume	
Gesamtmietfläche:		339 m <sup>2</sup>





0m 1m 5m  
 Masstab 1:125

Innere Raumaufteilungen sind optional und Änderungen im Grundriss bleiben vorbehalten.